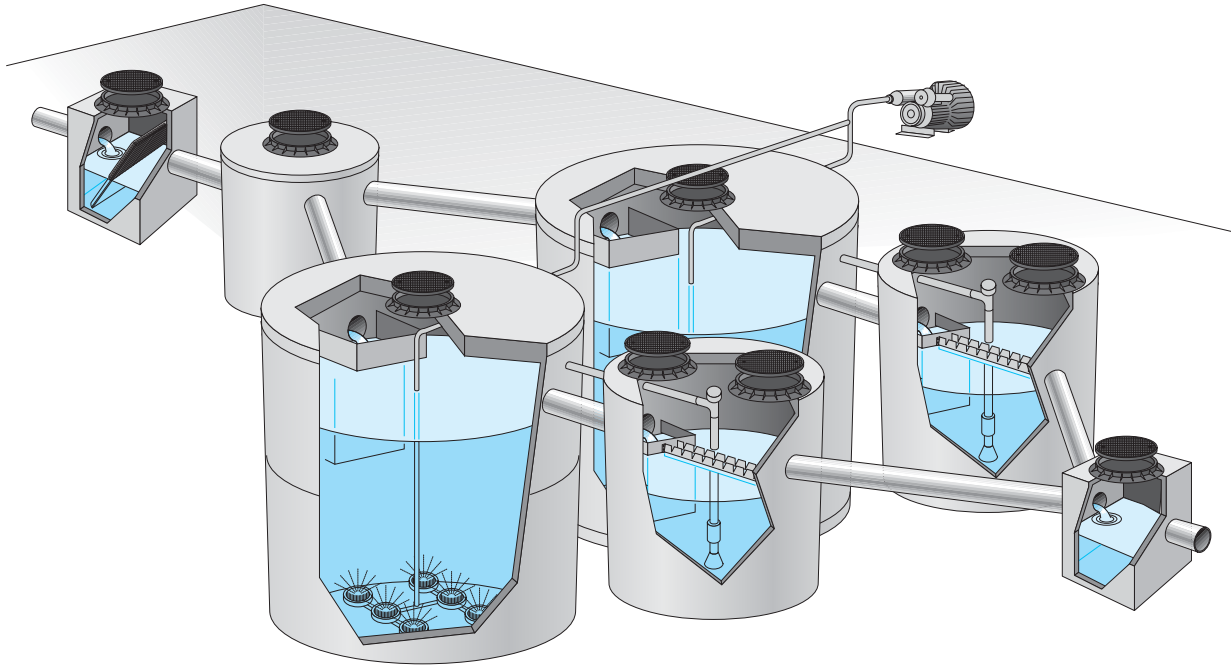


MODULAR RING TOTAL OXIDATION PLANTS FROM 300 TO 800 EQUIVALENT POPULATION

OXI/A series



WHAT ARE TOTAL OXIDATION PLANTS OXI/A SERIES

Modular ring prefabricated plants type EURO MEC OXI/A series for residential areas from 300 to 800 equivalent population are dimensioned in order to guarantee the acceptance limits to the discharge foreseen by the Directive 91/271/CEE for discharge in superficial water, principally composed of a cylindrical basin vertical axe of biological oxidation equipped with self-polishing membrane air diffusers and a final sedimentation with automatic sludge recycling.

The supply includes the blower type side channels for the production of compressed air and the general command and protection electric panel.

By request the modular ring prefabricated plants type EURO MEC OXI/A series can be executed with pre-treatment realised in a suitably dimensioned gross screening tank type Imhoff (OXI/AS series).

HOW TOTAL OXIDATION PLANTS OXI/A SERIES WORK

Modular ring prefabricated plants type EURO MEC OXI/A series for residential areas from 300 to 800 equivalent population are divided into the following sections: one for biological oxidation, where by means of aeration through air insufflation, happens the complete reduction of sewage organic substance; one of sedimentation, where sludge separation is obtained, which settle on the bottom, and skimming clarified water is sent to the discharge. Active sludge, collected from the bottom of the sedimentation section, is recycled in continuous by means of a pneumatic ejector to the oxidation, respect to overflow sludge, coming from biological increase, which is periodically extracted.

With the use of timers, that command the on/off of the blower, the functioning of modular rings prefabricated plants type EURO MEC OXI/A series can be fully automatised.

Modular ring prefabricated plants type EURO MEC OXI/AS series foresee before the biological treatment a sewage gross screening by means of an Imhoff tank, in which gross and sedimentable substances are kept from the inlet sewage.

USED MATERIALS

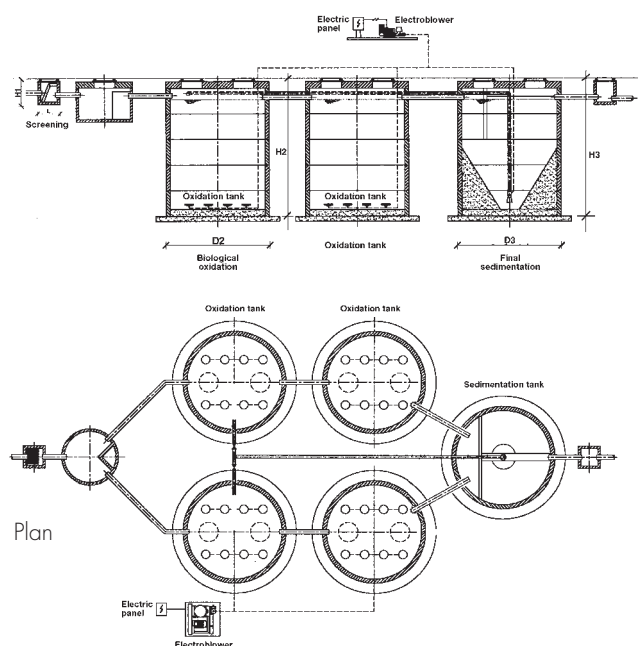
Tanks	:	highly resistant reinforced vibrated concrete
Shafts	:	concrete (if requested class D 400 cast iron)
Piping	:	galvanised steel and polyethylene
By request	:	stainless steel AISI 304

SPECIFICATION

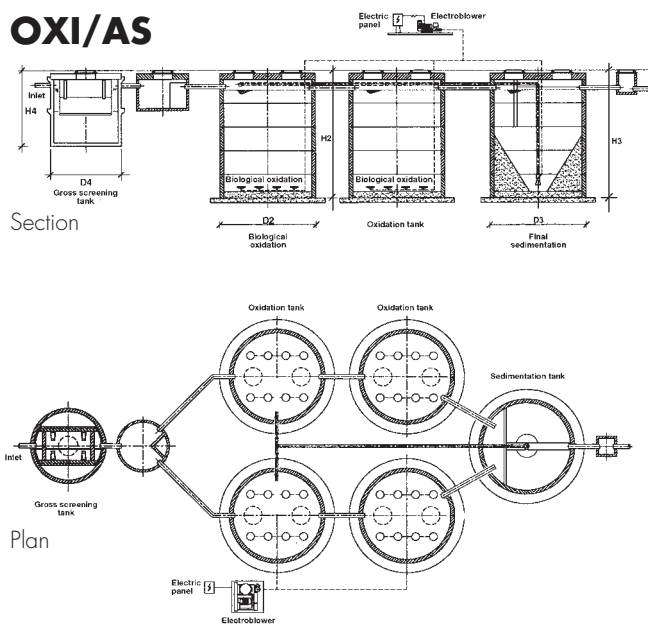
OXI/A: "Supply of prefabricated total oxidation depuration plant made of reinforced concrete type EURO MEC OXI/A series composed of tanks vertical axe made of modular rings to seal on site divided into biological oxidation and final sedimentation, complete with sewage inlet and outlet connection pipes, inspection shafts made of concrete, self-polishing membrane air diffusers, command and protection electric panel with timer and all other electromechanical parts for the correct functioning."

OXI/AS: "Supply of prefabricated total oxidation depuration plant made of reinforced concrete type EURO MEC OXI/AS series composed of tanks vertical axe made of modular rings to seal on site divided into initial gross screening type Imhoff, biological oxidation and final sedimentation, complete with sewage inlet and outlet connection pipes, inspection shafts made of concrete, self-polishing membrane air diffusers, command and protection electric panel with timer and all other electromechanical parts for the correct functioning."

STANDARD PRODUCTION



OXI/AS



Modular ring total oxidation series OXI/A
For discharge in superficial water – Directive 91/271/CEE

DESCRIPTION	MEASURE UNIT	MODEL								
		OXI/A 300	OXI/A 350	OXI/A 400	OXI/A 450	OXI/A 500	OXI/A 550	OXI/A 600	OXI/A 700	OXI/A 800
Equiv. population	n.	300	350	400	450	500	550	600	700	800
Daily flow rate	mc/g	45	52,5	60	67,5	75	82,5	90	105	120
BOD5	Kg/g	18	21	24	27	30	33	36	42	48
Installed power	kW	4	4	5,50	5,50	5,50	7,50	7,50	7,50	9,2
Blowers	n.	24	28	32	36	40	44	48	56	64
Screening	L1	cm	80	80	80	80	80	80	80	80
	H1	cm	96	96	96	96	96	96	96	96
Oxidation	D2	cm	2x300	2x300	2x300	4x300	4x300	4x300	4x300	4x300
	H2	cm	395	395	470	320	320	320	395	470
Sedimentat.	D3	cm	2x200	2x200	2x200	300	300	2x300	2x300	2x300
	H3	cm	279	279	329	370	370	320	320	320
Inlet level	cm	-25	-25	-25	-25	-25	-25	-25	-25	-25
Outlet level	cm	-50	-50	-50	-50	-50	-50	-50	-50	-50
Weight	q.ls	310	310	330	430	430	500	500	500	550

Initial gross screening type Imhoff series OXI/AS

DESCRIPTION	MEASURE UNIT	MODEL								
		OXI/AS 300	OXI/AS 350	OXI/AS 400	OXI/AS 450	OXI/AS 500	OXI/AS 550	OXI/AS 600	OXI/AS 700	OXI/AS 800
Gross screening type	D4	IMO/100	IMO/100	IMO/115	IMO/115	IMO/145	IMO/145	IMO/145	IMO/195	IMO/195
	H4	cm	200	200	200	200	300	300	300	300
Total weight		q.ls	68	68	74	74	97	97	97	117
			68	68	74	74	97	97	117	117

The above written data are given as information. The Society EURO MEC S.r.l. reserves the right to change them in every moment.

The plants can be supplied with hydraulic flow rates and organic loads even different from the ones in the schedule, which are of 150 l/inhab. g. and of 60 g BOD5/inhab. g.